

# FAMILY NOTES

## THE HUBBELL FAMILY HISTORICAL SOCIETY

*Descendants of Richard Hubball, Immigrant to North America*

Incorporated in Missouri

Number 24

Fall 1997

### SPRINGFIELD, MO. CHOSEN FOR NEXT BIENNIAL REUNION

Springfield, Missouri, will be the site of the 9th Biennial Reunion June 22-26, 1999, according to a decision by the Board of Directors meeting at Burlington last June.

Springfield is the county next to Marshfield, the birthplace of the most famous member of the family, the astronomer Edwin Powell Hubble. It is also near the scenic Ozarks with the popular music and entertainment center Branson.



Jack Jerome Hubbell

Jack Jerome Hubbell (#10601), a resident of Springfield, is chairing the Program Committee for the 9th Reunion. Jack's Hubbell Mechanical Supply Company serves as headquarters for the Society. Previously, Jack has been a Society Director, Membership Chairman, and President of Hubbell Center.



Donald & Madalene Hubbell

Working with Jack on the Program Committee are Donald and Madalene Hubbell (#8625) of Parma, Ohio. They chaired the Program Committee for the 5th Reunion in Hawaii.

### A NOTE FROM HFHS PRESIDENT H. G. HUBBELL

Thursday, Friday, and Saturday April 16-18, 1998, are being set aside at Hubbell Center in Des Moines to provide an opportunity for all Society members to visit the Center and help with work that needs doing such as arranging artifacts and filing documents.

Here is a chance for you to enjoy a mini-reunion of the family and to know the Center.

If you would like to help and socialize, please contact either the Center President H. B. Hubbell or me.

### GIFTS TO SOCIETY NOW DEDUCTIBLE

An unsolicited letter from the Internal Revenue Service on April 28, 1997 informed the Society that gifts to it are now tax deductible under Code 501.C3.

Previously, gifts to the Scholarship Fund and Hubbell Center had been deductible but the Society itself had not sought exemption on the basis of legal advice that family societies were not eligible. Separate corporations had been set up for the Scholarship Fund and the Center.

The new ruling reflects an IRS judgment that the Society has existed for a number of years (it was founded in 1981), has a widespread membership and has performed various things of educational and public value. Now only the annual dues of \$15 are not deductible. Thus Contributing Members may deduct \$35; Participating Members, \$85; and Proud to be a Hubbell/Hubble Members \$185.



Susan Beougher & her mother, Donna Braithwaite

Publicity Chair for the Reunion is Susan Beougher (#4826) of Worthington, Ohio. Susan is a past chair of the Library Committee.

### THREE WIN \$500 SCHOLARSHIPS

Three \$500 scholarships were awarded by the Society's Scholarship Fund after a drawing on July 6 by the Rev. Joseph Bassett of Chestnut Hill, Massachusetts, according to Dr. John Platt Hubbell, Jr., President of the Scholarship Fund.



Erin Derksen

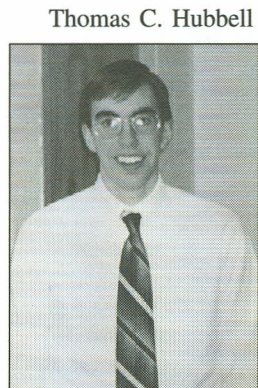
One scholarship went to Erin Derksen of Wauwatoosa, Wisconsin. Erin is a student at Marquette University. She is the granddaughter of Society members Leonard and Ada Hubbell Derksen (#6642) of West

Allis, Wisconsin. The picture shows Erin in her high school graduation robe. The colored cords represent honors in general scholarship, Spanish and theater.



Amy Beth Hubbell

Amy Beth Hubbell of Haslett, Michigan, is a junior at the University of Michigan. She transferred this year from Western Michigan University. She is the daughter of Society member Richard Hubbell.



Thomas C. Hubbell

Thomas C. Hubbell (#13314a) of Bennington, Vermont, is a student at Sienna College in Loudonville, New York. Thomas is the son of Society members Thomas E. and Mary S. Hubbell and the grandson of Society member Aletha G. Hubbell.



## PERSONAL NEWS ITEMS

**Sally Jo (#10143) and Amos C. Carey** of Foster City, California joined other members of the honorary Admirals of the Texas Navy for the 1997 Annual Banquet. Everyone agreed that the victory of Sam Houston over Santa Ana at the land battle of San Jacinto was due to the Texas Navy preventing Mexican reinforcements! Sally Jo says they were reminded that being a Texan is not a matter of birth but a state of mind. \*\*\*

**Samuel Bird (#2904)** of Concord, Massachusetts, has many items from China which were purchased there by his great-grandfather, Henry Wilson Hubbell, who had lived many years in the Orient while conducting business. Among the items are miniature portraits of two of Henry's three daughters. \*\*\*

**John and Marcia Hubbell Bachman** (#10057c) and **Ansel** of Lenhartsville, Pennsylvania, camped for 5 days in September on Chincoteague Island off the Atlantic coast of Maryland to observe the fall bird migration. Ansel, who will be 10 next December 26, has attended four Biennial Reunions. \*\*\*

**Mary Belle Hubbell Windsor (#8639)**, aunt of Society member Anne Thorne Weaver, died at age 85 on May 14. She was the granddaughter of Frederick Marion Hubbell. She moved into Terrace Hill in Des Moines (now the Governor's mansion) at age 12 and had a secret club with friends in the carriage house. Mary Belle's husband, James R. Windsor, became the tenth president of Equitable Life Insurance of Iowa. She served as president of

the Children's Home in Des Moines and the Women's Council at St. Paul's Episcopal Church. She was a board member of the Des Moines Metro Opera and the Science Center of Iowa. \*\*\*

**Ernest Hubbell (#8968)** of Kansas City, Missouri, recently contributed \$1,000 to Hubbell Center in Des Moines so that it can have professional office assistance for the Curator/Librarian Pat Dawson to speed up the work of computerizing documents. Ernest was the first president of the Society. \*\*\*

**Susan Hubbell Dawson (#7341)** of Baton Rouge, Louisiana, and her brother Bob Hubbell of Winchester, Virginia, enjoyed a 2-week cruise on the Baltic in July and August. They went ashore in seven countries and were interested that six ports had similar medieval commercial architecture from the days of the Hanseatic League of trading cities. \*\*\*

**Melinda Patterson Grenier** of Kingston, New Jersey, edits the *Wall Street Journal Classroom Edition*, a full-color, tabloid-size monthly version of the *Wall Street Journal* used in secondary schools. This summer she attended the national meeting of the Securities Industries Foundation for Economic Education in Colorado. It sponsors the Stock Market Game played by some 600,000 students. She was able to spend a day driving in the Rocky Mountain National Park and walked for two hours at 13,000 feet. Later she was invited to participate in workshops for North Dakota teachers as part of an Investor Education Pro-

gram sponsored by the State Securities Commissioner. There she found time to retrace some of Lewis and Clark's trail. \*\*\*

**The Revs. George T. and Nanette Hubbell (#8653)** are co-pastors of the Concord United Methodist Church in Englewood, Ohio. \*\*\*

**Garry Hubbell (#13148)** was captain and coach of the champion slo-pitch baseball team at the General Electric plant in Peterborough, Ontario in the summer of 1996. \*\*\*

*Cont. on page 10*

### FAMILY NOTES

NUMBER 24

FALL 1997

Distributed twice a year to members of The Hubbell Family Historical Society. An *Annual* of Society reports, history, biography and genealogy is also distributed to members.

#### Editor

John A. Hubbell

1662 Mars Ave.

Lakewood, OH 44107

216/521-9027 FAX 216/521-9028

E-mail: johnhubb@dchurchbell.com

### THE HUBBELL FAMILY HISTORICAL SOCIETY

A volunteer, not-for-profit organization founded in 1981, incorporated in 1982. The Society invites membership from descendants of Richard Hubbell of England and New Haven Colony, Connecticut, from persons interested in genealogy and history, and from organizations supporting such activities.

#### President

Harold George Hubbell

#### Treasurer

Clifford A. Moses

#### Annual Dues

(Payable in U.S. or Canadian dollars)

Husband & wife, individuals.....	\$15
Contributing Member.....	50
Participating Member.....	100
Proud to be a Hubbell/Hubble.....	200
Societies and libraries.....	10

*All but \$15 is tax deductible.*

#### Reunions

Membership-reunion meetings are held every two years. The next Biennial will be in Springfield, Missouri, June 22-26, 1999.

For information, write the Society Office  
2051 East McDaniel Street  
P.O. Box 3813 GS  
Springfield, Missouri 65808-3813  
FAX: (417) 863-0163  
HubbellGen@aol.com

### SHIPMATES ARE HFHS MEMBERS

HFHS members Robert J. Tate (#294) of Bethany, Oklahoma, and Gerald B. Hubble (#7774) of Kansas City, Missouri, met for the first time at the annual reunion of former crewmembers of the USS HARRY E HUBBARD (DD-748) held in Chattanooga, Tennessee during 17-19 April.



Robert Tate and Gerald Hubble

It was only a few weeks before the reunion that they discovered they were cousins and had served on the same ship. Hubble left the HUBBARD just before the arrival on board of Tate. They both worked in the ship's office as a personnel man (PN).

The similarities don't end there! Both stayed in the Naval Reserve after release from active duty and both retired as PN1.

### HUBBELL CENTER

Library and Museum

#### President

Harold B. Hubbell Jr.

#### Treasurer

James W. Hubbell, Jr.

#### Librarian/Curator

Patricia Dawson

Suite 422 Hubbell Building

904 Walnut Street

Des Moines, Iowa 50309

515/323-3080

HUBCENT@aol.com

*Gifts are tax deductible.*

### SCHOLARSHIP FUND

Scholarships are awarded to descendants of Richard Hubbell who are members of the Society or children or grandchildren of members and who have completed one or more years at an accredited college.

#### President

John Platt Hubbell, Jr. M.D.

65 Putnam Street

Needham, Massachusetts 02194

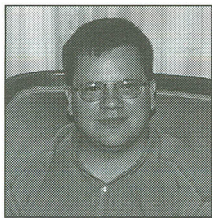
*Gifts are tax deductible.*



## JOHN A. HUBBELL IS NEW EDITOR OF FAMILY NOTES

Starting with next spring's issue, John A. Hubbell (#11159) of Lakewood, Ohio, will be the new Editor of *Family Notes* and his brother Matthew of Parma, Ohio, will be the Assistant Editor, it was announced by Clifton H. Hubbell, Chair of the Publications Committee. They will also become members of the Publications Committee.

John and Matthew replace Robert L. Hubbell (#7340), who has decided to retire. Bob will continue to edit the *Annual*.



John A. Hubbell



Matthew R. Hubbell

John has a major in communications. He and Matthew have attended several Biennial Reunions. They are sons of Donald C. and Madalene Hubbell, who are Directors of the Society. They are associated with their father in a computer software firm where they can easily get material ready for print.

Clifton writes that "Bob has done an outstanding job as editor for six years. We are fortunate that John will be the new editor."

Bob wishes to express his gratitude for the support of many Society members and hopes they will continue to send clippings about Hubbell/Hubbles and personal news items to John. Members can start that support by sending him a copy of your family Christmas letter.

The address is: **John A. Hubbell, Editor; 1662 Mars Ave., Lakewood, OH 44107. Telephone: 216/521-9027; FAX: 216/521-9028; E-mail: johnhubb@dchubbell.com**

### THANK YOU

Pictures of scenes and people at the Biennial Reunion were sent to your editor by Barbara Kruse, Karen Hubbell, Frances Marks, Harold B. Hubbell, Jean N. Hubbell, Madelene Hubbell, Clifton Hubbell, Carol Boggs, Charles Potter. All were gratefully received. This issue contains more photos than ever but unfortunately not all could be used.

## NEW DIRECTORS AND EXECUTIVE GROUP ELECTED

Seven new Society Directors were elected on June 25 at the general meeting of Society members in Burlington, Vermont. These Directors are eligible to serve until the year 2003.

The group includes three people who had previously been directors and had rotated off. They are Clifton H. Hubbell (#7339) of Downers Grove, Illinois; Hilbert R. Hubbell (#9750) of Derwood, Maryland and Ruth Hubbell Cheney Ryan (#a135i) of Madison, Mississippi.

Four newcomers to the Board are Betty Jo Chapman (#3933) of Cahokia, Illinois; Dr. Peter Owen Hansen (#6506) of Kenai, Alaska; Robert J. Hubbell (#8669) of Camino, California and Robert D. Hubble (#10262) of Bucyrus, Ohio.

These seven join 14 other Directors (classes of 1999 and 2001) and five officers (Betty Jo Chapman is both an officer and a director) to make a Board of 26 people from 13 states and from Ontario.

The Nominating Committee was chaired by Harlin Hubbell (#11006) of Mount Vernon, Ohio.

The new Board of Directors met June 27 and elected an Executive Committee to act between meetings of the Society or the full Board. Under Missouri law (the Society is incorporated in Missouri), the Executive Committee can conduct all business except amending bylaws and electing new directors. The Executive Committee is required by Society bylaws to hold at least one meeting between Biennial Reunions.

Chosen for the Executive Committee were four officers—President Harold G. Hubbell, Vice President Donald C. Hubbell, Treasurer Clifford Moses and Corresponding Secretary Betty Jo Chapman—and three others: Carol Hubbell Boggs (#11690) of Chapel Hill, North Carolina; Harold B. Hubbell, Jr. (#12515) of Rowayton, Connecticut and Robert D. Hubble, a newly elected Director.

The Executive Committee will meet at Hubbell Center in Des Moines on Saturday, April 18, at the same time as the Hubbell Center Board meeting. It is planned that some members of the two groups, together with other interested Society members will come the preceding two days for work projects at the Center.

## SOCIETY ELECTS SIX OFFICERS

Meeting at the 8th Biennial Reunion in Burlington, Vermont, Society members elected six officers. Re-elected were President Harold George Hubbell (#12933) of Greeneville, Tennessee, and Corresponding Secretary Betty Jo Chapman (#3933) of Cahokia, Illinois.



Karen and Harold George Hubbell at Sunnywood's Big House in Chazy, New York.

Newly elected as Vice President was Donald C. Hubbell (#8625) of Parma, Ohio. Donald has served as Treasurer since 1993 and was Assistant Treasurer before that. Mary Hubbell Kimmel (#8667) of Caledonia, Wisconsin, was Vice President in 1995-97.

The new Treasurer is Clifford Moses of Citrus Heights, California. Clifford is the husband of Nancy Hubbell Moses (#9414). Together they chaired the Program Committee in 1994-95 which made arrangements for the 7th Biennial Reunion in Folsom, California. Clifford is an auditor.

The new Assistant Treasurer is Gary Beougher (#3746) of Worthington, Ohio. Gary is Director of Administrative Services at Buckeye Ranch, a residential treatment center for emotionally disturbed children. Members who attended the reunion in Hawaii will remember Gary as the person who succeeded at getting the attendees lined up on the hotel roof for a group photograph. The position had been vacant recently.

Returning as Recording Secretary is Jean N. Hubbell (Mrs. John Howard Hubbell #8668) of Rockville, Maryland. Jean had earlier served in that position and now succeeds Barbara Kruse (#5327) of East Northport, New York.

## REPRINT PLANNED OF 1980 HISTORY

All copies of the 1986 reprint of the 1980 *History & Genealogy of the Hubbell Family* have been sold. The Board of Directors authorized the Publications Committee to arrange for a reprint, since the book contains much biographical information not repeated in the *Additions & Revisions* volume issued in 1995.

Publications Chair Clifton H. Hubbell reports that he has now received bids from seven firms and is awaiting word from Desmond Reid Enterprises, which produced the 1980, 1986 and 1995 volumes.

The reprint will include a completely new and much more detailed index of about 100 pages which has been prepared by the Genealogy Chair, Hilbert Hubbell. Unfortunately, the computer file on which Hilbert had the index was lost. Using a printed copy, Hilbert scanned the pages into a working computer file, edited and reformatted the material.

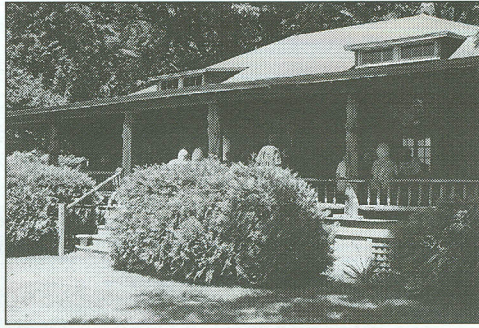
Proofreading the index was difficult, since the scanner has trouble telling a zero from a capital "O" and a one from a lower case "L" The good news is that the work is complete and will improve the value of the reprinted edition.



# Scenes from 8th Biennial Reunion



Happy Reunion cake at Sunday brunch. From left: Cedric "Bruz" Pierce, Ralph "Pete" Hubbell, Harold G. Hubbell, Jane Hubbell.



Brunch at the Big House, Sunnywood, Chazy, New York.



Vermont jigsaw puzzle in Hospitality Room.



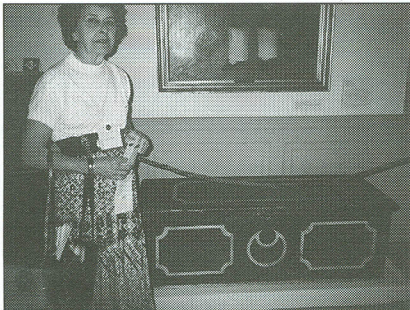
Group in front of Trapp Family Inn.



Three generations: grandparents Donald C. (#8625) and Madalene Hubbell, parents Terri and Matthew Hubbell, children Clayton, Victoria and Marie.



Karen and Ronald Hubbell (#11730) with S.S. TICONDEROGA at Shelburne Museum.



Ruth Hubbell Cheney Ryan (#a135i) before her grandmother's chest in Shelburne Museum



Marcia Hubbell Bachman (#10057c) and Ansel Bachman.



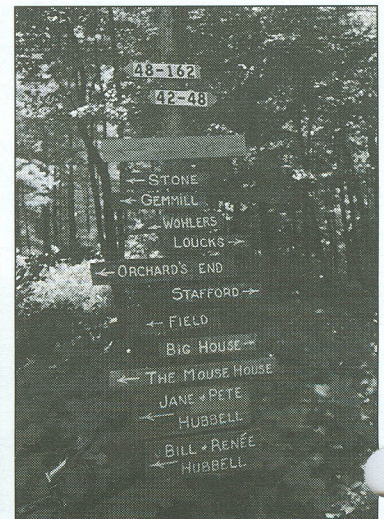
Aureen Richardson (#1456), Fred and Meg Jones (#5437)



Barbara Potter, Ruth & Harlin Hubbell (#11006), Charles Potter (#284)



Barbara Kruse (back to camera), Dorrance Hubbell (#11180), Gene and Isabelle Hubble (#11409), Michael Ray Hubbell (#14454), Raymond H. Hubbell (#12787a) and Aureen Richardson in kitchen of Ethan Allan house.



Signs to eleven of the fourteen family houses at Sunnywood, the 100 Hubbell acres at Chazy, New York, where Jane and Pete Hubbell hosted a brunch for the Biennial Reunion.



Celeste Hubble Kauhanen (#13035), Ruby Campbell (#8366), Barbara (#8366) and Bob Dawes.



Jan Hubbel Heaton (#13028), Diane Hubbel (Mrs. John F. Hubbel, #13029), Joan Hubbel Bowden (#13027).



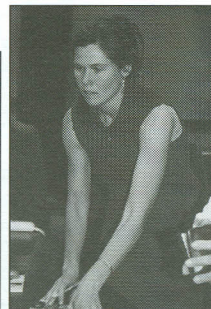
# in Vermont, Lake Champlain, & Chazy



Esther and Clifton H. Hubbell (#7339)



A family group — Gerald Hubbell (#11207—son of Robert J.), Jean Hubbell McCabe (#8666), Mary Hubbell Kimmel (#8667), John Kimmel, Marjorie and Robert J. Hubbell (#8669), Jean and John Howard Hubbell (#8668).



Jan Reynolds (wife of Javin Pierce (#9171) autographing copies of her book "Mother and Child" after her slide talk at the Biennial.



Anne and Harvey Hubbell IV (#8490)



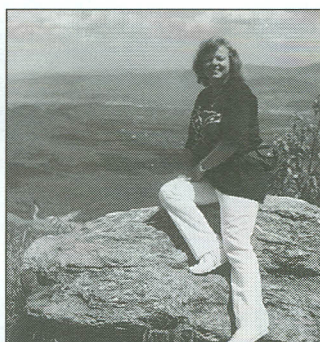
Barbara Kruse (#5327) and Betty Jo Chapman (#3933).



Rudy and Joy Favretti



Dorrance S. Hubbell (#11180) and his fiancée Doris Mingus.



Karen (Mrs. Harold G.) Hubbell atop Mt. Mansfield.



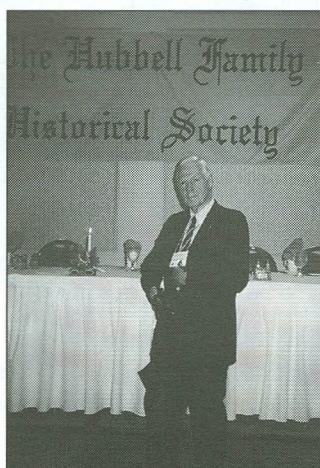
Nancy Hubbell Moses (#9414) and her children Holly, Elizabeth, Heather, Michael, Paul, Stephanie, Matthew.



Nancy and Clifford Moses.



Susan Hubbell Dawson (#7341) and her brother Robert L. Hubbell



Harold B. Hubbell, Jr. (#12515).



Three generations: grandparents R. Leroy (#11405) and Mary Hubble, parents Shelley Ann and Howell Kent Hubble, children Jordan and Caroline.



Glenna and Charles Hopper, Donna Braithwaite, Susan Beougher, Richard and Irene Hubbell, Ruth Hubbell Chény Ryan.



Board of Directors meeting, June 24, 1997.



Aboard "Spirit of Ethan Allan II" on Lake Champlain, June 26, 1997.



Gerald B. Hubble (#7774), Edith and Richard Hubbell.

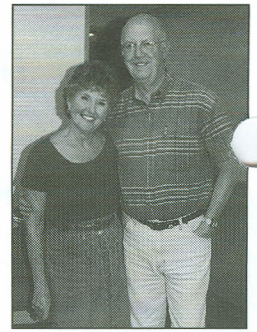
Continued on Page 6



# More of the Biennial...



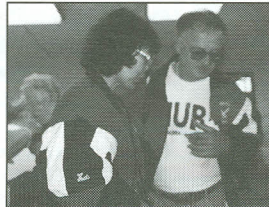
Martha and Richard Hubbell



Dot and Bob Hubble



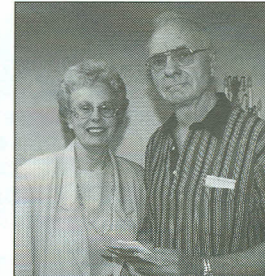
Bob and Carol Rudy



Garry Hubbell and friend Ampy



Claire and Bruz Pierce



Jean and Bob H. Hubbell



Janice and Howard Bernien



Dessert table at banquet



Creative Memories Workshop with Kathryn Lorenz

## SOCIETY MEMBERS CELEBRATE 66TH ANNIVERSARY

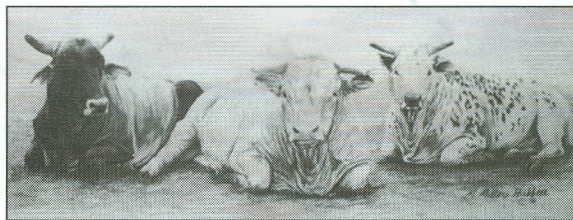
Society members Glen and Edna Hubble Gill (#11379) celebrated their 66th wedding anniversary on June 20, 1997. They were honored with a card shower at their home near Clay City, Illinois. Later there was a family dinner.

Edna and Glen have a son William Robert who lives in nearby Cisne with his wife Barbara and a daughter Barbara who lives in



Glen and Edna Hubble Gill

nearby Mattoon with her husband Chuck Slavens. They have four grandchildren and six great-grandchildren.



## HUBBELL ARTIST

Marti Miller Hubbell of Tres Pinos, California, is the artist of these two pictures reprinted from the February 1997 issue of *Western Horseman* magazine. Marti grew up on a ranch. Today her husband winter pastures about 2,000 cattle.

## JOINT HISTORY COMMITTEE HEADED BY DORCAS AUNGER

Dorcias Aunger (#8877) of Arcadia, California, is chair of the newly formed History and Biography Committee which serves both the Society and Hubbell Center.

Committee members for the Society are Betty Jo Chapman, Bert Hubbell, Hilbert Hubble and Myrna Kepford. Members for Hubbell Center are Pat Dawson, Harold B. Hubbell, Jr. and Harvey Hubbell IV.

The Committee is concerned about getting historical information at Hubbell Center so organized that researchers can use it. It will have a work session at the Center in Des Moines when the directors of the two organizations meet. The Committee also has a long range interest in more Society publications, such as books or booklets on family military service or family place names.

Dorcias is a retired history teacher who has been active in genealogical and historical societies as well as Scouting and Masonic activities.



## ROSELLA HANSEN MAKES MEMORIAL GIFT TO CENTER

Dr. Peter Hansen, speaking on behalf of his mother, Rosella Hubbell Hansen (#6506), read a tribute to his father at the Biennial Reunion banquet and presented a memorial gift of \$500 to the library at Hubbell Center.



Dr. Peter Hansen (at left) presenting gift to Hubbell Center President Harold B. Hubbell (in center). Society President Harold G. Hubbell is at right.

Roy S. Hansen had been a successful hardware merchant for 21 years in Cheney, Washington, and then served for 12 years as a City Supervisor. He had also been a city councilman, police commissioner and Chamber of Commerce president.



Rosella Hansen and Karolee (Mrs. Peter) Hansen

Rosella has served as a Society Director and was the author of the Washington State chapter in *Hubbell Pioneers*. Peter was elected a Director at Burlington.

## SOCIETY PLANS HALL OF FAME

Plans for a Hall of Fame which would recognize and honor people who have performed important service for the Hubbell Family Historical Society are being developed by a committee which includes Charles Potter (#284) of Ocala, Florida; Bob Albee (#10081) of Sun City, Arizona and Meg Jones (#5437) of Grosse Ile, Michigan, along with the Presidents of the Society and Hubbell Center, Harold G. and Harold B. Hubbell.

This scattered group is corresponding with multiple copies to each other, discussing criteria for nominating people to the Hall of Fame. The tentative plan is that people would be recognized at Biennial Reunions and their photographs would then be displayed at Hubbell Center.

## SURVEY ABOUT HUBBELL CENTER

When Society members were on a dinner cruise on Lake Champlain during the Biennial Reunion, they were given survey cards to learn about their current knowledge and future hopes concerning Hubbell Center.

That the Center in the Hubbell Building in downtown Des Moines has genealogical materials and books by or about Hubbell/Hubbles was generally understood. Less well known was the presence of paintings, photographs and historical documents, as well as various kinds of artifacts.

Suggestions included display of handi-crafts made by family members, accumulation of family treasures and costumes, exhibits about famous Hubbells. Gifts of such items should be actively sought.

Several suggestions dealt with aspects of computers. The Technical Communications Committee is working on a web site for the Society. A CD Rom Family Tree Maker has just been contributed. A computerized catalog is being developed.

A number of respondents spoke of the need for gifts of money to finance more rapid cataloging. Volunteers are also needed to help arrange artifacts and do filing. As announced on the first page of this issue, such a work session will take place April 16-18, 1998.



## TWO OMAHA AWARDS FOR ANNE WEAVER

Society member Anne Thorne Weaver (#8638) of Omaha, Nebraska, received two awards within four days. On May 12 she was inducted into the Junior League Sustainer Hall of Fame. Then on May 15 at the Annual Civic Luncheon of the Omaha Salvation Army she received the Evangeline Booth Award.



Anne Thorne Weaver

The citation reads:

"Anne Thorne Weaver has shown her commitment to helping others through her involvement in a variety of community organizations.

"She has been a cherished member of the Army's Women's Auxiliary Board since 1986, serving as vice president and president. Willing to serve wherever needed, she has also chaired many Auxiliary projects, including Undinner, Civic Luncheon, Membership Drive, Christmas Interviews, Nominating, Community Centers and Tree of Lights.

"Anne has three children and two grandchildren."

To complete the special week, Anne celebrated her birthday on the 16th.

## FOR 1998, FUND OFFERS 4 \$750 SCHOLARSHIPS

Next year the Society's Scholarship Fund will offer more and larger scholarships, according to a decision made at the Biennial Reunion in Burlington.

Instead of three scholarships, as in 1997, or two, as in 1996, there will be four scholarships in 1998. Instead of \$500, as in the last two years, the amount will be \$750 for each scholarship.

This progress has been made possible by the generosity of Society members, who can designate the use of their contributions over the \$15 annual dues. These contributions are tax deductible.

To be eligible for a scholarship, an applicant must be a descendant of Richard, must be a Society member or a child or grandchild of a member and must have completed at least one year at an accredited college. Winners are chosen by lot.



Dr. John Platt Hubbell, Jr., President Scholarship Fund, and his wife Marnie, a Fund director

Application forms may be obtained from Dr. John Platt Hubbell, Jr., 65 Putnam Street, Needham, MA 02194.



## CAPE COD VISITORS USE ATLAS/GUIDE FOR GENEALOGY

A second and updated edition of Marjorie Hubbell Gibson's (#9011) book *Historical and Genealogical Atlas and Guide to Barnstable County, Massachusetts* was published this summer by the Falmouth Genealogical Society.

The first edition was published in 1995 and proved very popular with people wanting to do genealogical research or visit family sites in Cape Cod.

The book has maps and information on libraries, cemeteries, churches, repositories, family associations, town offices, and brief town histories, and historical sites.

Marjorie suggests that other family members work with their local genealogical or historical societies to produce similar atlas/guides for other areas. Queries can be addressed to her at Box 1404, Cotuit, MA 12635. Her telephone is 508/428-5658.



## TECCOM PLANS FOR E-MAIL AND WORLD WIDE WEB

The Society's Technical Communications Committee (Teccom) is e-mailing information about Hubbells/Hubbels in a Hubbell Network News (HUBNET) every two weeks, according to Committee Chair Robert G. (Bob) Dawes (#8366).

HUBNET goes to more than 90 Society members who have e-mail. If you have an address and are not on the list, please send a message to Bob at rdawes@connect.reach.net. Bob collects information from many and then prepares a bi-weekly digest. Among those supplying information are Hilbert Hubble, Barbara Kruse, Carol Boggs, and Harold G. Hubbell.

The Society will also have a Home Page on the World Wide Web which will provide the world at large with access to the Society, giving information about benefits of membership, holdings at Hubbell Center, items for sale, genealogy. The web site has a trial home page at www.pacificnet-cooperag/hfhs/hfhs.htm. Anne Cooper and John A. Hubbell are designing the page.

Each month, Clifton Hubbell will summarize a chapter from *Hubbell Pioneers* for publication on the web page. Cliff was the Publication Coordinator of the book.

Bob Dawes retired from Bell Canada in 1994 and now has his own management consulting practice. His wife Barbara is a granddaughter of Cecil Mary Hubble. Both Bob and Barbara are active in the Ontario Genealogical Society.

The Teccom members are Lorraine Ashland, Dorcas Aunger, Marcia Bachman, Carol Boggs, Burr Hubbell, Gerald Hubble, Hilbert Hubble, Fred and Meg Jones and Barbara Kruse.



Computer buffs, gather at the Biennial Reunion. Seated is Carol Hubbell Boggs. Standing from left are Barbara Kruse, Harlin and Ruth Hubble, Hilbert Hubble and Jeanette LaMacchia.

## SOCIETY GIVES RECOGNITION FOR SPECIAL SERVICE

Nineteen members of the Society received recognition for services during the past two years at the Biennial Reunion Banquet on Saturday, June 28 in Burlington, Vermont.

A present was given to Claire Hubbell Pierce (#9171) for chairing the Program Committee which organized the Biennial Reunion.



Claire Hubbell Pierce

A plaque was presented to Carol Hubbell Boggs (#11690) for her many services. Carol was a director of the Society and of Hubbell Center. She chaired the Membership and was co-chair of the Technical Communications Committee. She was an active member of the Program Committee and the Genealogy Committee.



Carol Hubbell Boggs

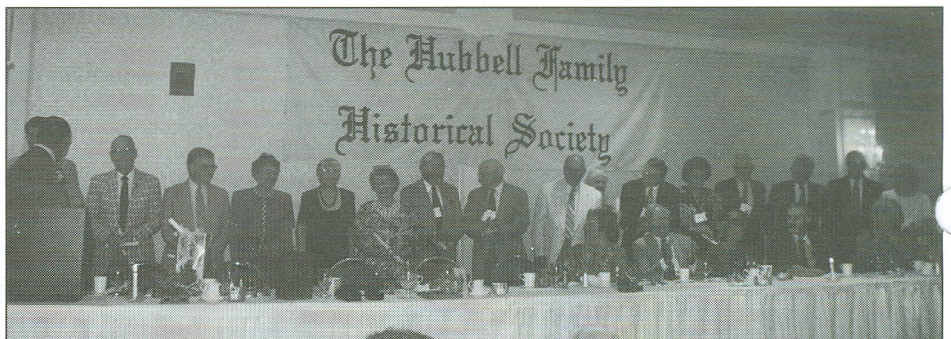
Seventeen people received certificates of appreciation. They are listed below in the order in which they appear from left to right in the photograph below:

Jack Jerome Hubbell (#10601) - Society headquarters (behind Harold G. Hubbell in photo), Harlin Hubbell (#11006) - Nominating Committee, Ralph "Pete" and Jane Hubbell (#8978) -

Reunion brunch, Barbara Kruse (#5329) - Recording Secretary, Jean N. Hubbell (#8668) - notes of condolence and congratulation.

Dr. John Platt Hubbell, Jr. - Scholarship Fund, Clifton H. Hubbell (#7339) - Publications Committee, R. Leroy Hubble (#11405) - sales at Reunion and Finance Committee, Marcia Hubbell Bachman (#10057c) - manual on reunions, Donald C. Hubbell (#8625) - Treasurer, Maureen Rischard (#1078) - memorial in Sutter Creek.

Harold B. Hubbell, Jr. (#12575) - Hubbell Center, Robert L. Hubbell (#7340) - editor of *Family Notes* and *Annual*, Hilbert R. Hubble (#9750) - Genealogy, Nancy Kausyla (#11737) - publicity, and Ernest Hubbell (#8968) - parties to recruit members (certificate given in absentia).



Group receiving certificates of appreciation.

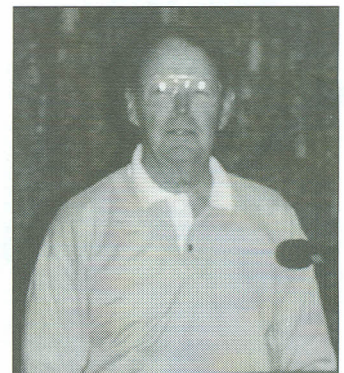
## HUBBELLS SELL EQUITABLE COS. TO DUTCH FIRM

Equitable of Iowa Companies, which are 50% owned by about 100 members of the founding Hubbell family (See Iowa chapter of *Hubbell Pioneers*) announced on July 8 a merger agreement under which it would become a wholly owned subsidiary of the ING Group of the Netherlands.

According to the *Wall Street Journal*, Fred Hubbell, Chairman and Chief Executive of the Des Moines, Iowa, based life insurer, said, "We were not for sale because we were growing very well but ING gradually persuaded us that they too have an excellent business." He said Equitable's board had approved the offer and no major objection is expected from shareholders.

ING Chairman Aad Jacobs said he did not intend to change Equitable's management nor to impose measures to improve productivity. "They've proven themselves an excellent management team," he said.

Equitable had 1996 earnings of \$123 million or \$3.86 a share and premium income of \$2.1 billion. Analysts forecast a 1998 profit of about \$4 a share. ING offered \$68 a share, which is about 17 times earnings. Before the offer, Equitable shares were quoted at \$57.30.



James W. Hubbell, Jr. speaking at the Biennial Reunion in Burlington June 25.

James W. Hubbell, Jr. is a retired chairman of Equitable of Iowa. He is Treasurer of Hubbell Center and has been a Director of the Society. Several other members of the Iowa family are also Society members.



## FAMILY PORTRAIT IS PASSED ALONG

Reproduced below is a portrait of Betsy Shelton Hubbell, who was born in 1794 and died in 1862. Betsy was the wife of Samuel Hubbell (#644). The portrait was painted by Betsy's granddaughter Nell (Helen) Hubbell Whitney.



Betsy Shelton Hubbell

Over the years, the portrait has been owned by Nell's niece Ruth Shelton Hubbell and then by Ruth's nephew Lucius W. Hubbell II (#8657) of Tulsa, Oklahoma.

In 1995, Lucius tracked down his second cousin John Howard Hubbell through the Hubbell Society and said the portrait should go to the descendant named Shelton (John's son #11204), the Society member who is stationed in Saudi Arabia. Shelton is a fifth generation descendant of Betsy Shelton Hubbell. At present Shelton's parents John and Jean have custody of the painting at their home in Rockville, Maryland. Lucius died December 3, 1996. He was 79.



## WATERCOLORS OF ROCK, ENGLAND

John H. Instance, the English artist who painted the picture of old Bewdley with the Wakefield residence which the Society sells (Richard Hubbell's mother was Sarah Wakefield) has now done two watercolors of the village of Rock, home of the Hubbells.

One is called "Summers' Morning." It shows a view of the half-timbered cottage opposite the church and of the tree planted for the Hubbell Society. The other painting is called "Summers' Evening." It shows the old Rock grove and a view of the church.

Prints of the paintings are 13" x 24". The leaflet received by the Society gives prices of 20.00 unframed and 45.00 framed but does not specify whether these are dollars or pounds. Queries may be addressed to the Old Bank Craft Studio, 9 Severnside South, Bewdley, Worcestershire, England.

## YOUR SPOUSE IS PROBABLY YOUR COUSIN

Have you ever set out to trace your entire family tree—not just your paternal line but all your forebears, including your four great-grandmothers, your eight great-great-grandmothers and all the other female as well as male ancestors?

If so, you have undoubtedly become aware of the implications of geometric progression, with the number of ancestors doubling each generation as you go back. This is discussed in an article found at Hubbell Center. In the *Science Digest* of November 1944, Lyle Owen writes about "Tracing Your Million Forefathers."

Owen says the average length of a generation, which is from the birth of the median child in a family to the birth of his or her median child, is now around 30 years. Using that figure, about 12 generations have occurred since Richard Hubbell arrived in New Haven Colony. (*Additions & Revisions* lists a few people in the 13th and 14th generations).

Twelve generations ago, you not only had Richard as an ancestor, but 4,095 other ancestors in that same generation, assuming no intermarriage of kin between then and now. In the 20th generation (after the Norman Conquest), the theoretical number of forebears exceeds a billion!

But, says Owen, a billion is more than the whole population of the world in the 11th century. Since it is obvious that no one could have had so many ancestors then, it becomes equally obvious that between then and now there must have been many marriages between relatives—sometimes knowingly; more often unknowingly because the relationship was more remote.

Several members of the Society can trace to more than one Hubbell ancestor, according to *Additions and Revisions*. The odds are good that they also have overlapping on the maternal side too. Indeed, when one thinks about the demographic situation of a rural pioneer society in which the number of eligible mates was limited, as was transportation to other places, the chances of marrying a close or distant relative are highly likely.

Society members tend to call each other "Cousin" as they write or meet at Biennial Reunions. Now perhaps husbands and wives should also address their partners as "Cousin"!



## NAVAJO EXTENSION AGENT

Esther Peterson Hubbell is a member of the Northeastern Arizona Native American Extension Task Force. She is responsible for certification of 4-H Volunteers, for program development on reservations and for redesign of the livestock program. Esther earned an M.S. degree from the University of Arizona.

## GIFTS FROM ROCK CHURCH GO TO HUBBELL CENTER

Two gifts which the Society received in 1988 from Rock Church in Worcestershire, England, will now be on permanent display at Hubbell Center in Des Moines.

When 32 members of the Society visited England in 1988, the Church of St. Peter and St. Paul in Rock held a special church service in their honor. After that service, John Nott, the senior warden, presented the Society with two gifts.



R. Leroy Hubble with chalice.

One gift was a handsome Royal Brierley crystal goblet or chalice with the words "Rock Church June 1988" engraved in the glass.

The other gift was a brass plaque inscribed:

presented to  
THE HUBBELL FAMILY  
in recognition of 350 years  
since Richard Hubbell left  
the Parish of Rock  
for New England.



Harvey Hubbell IV with plaque.

These gifts have been displayed at Biennial Reunions since then. At each Reunion, custody for the next two years has been passed as an honor to different members. Now that Hubbell Center is established in Des Moines for family memorabilia, these two gifts to the Society will be permanently displayed at the Center.

The last two custodians—R. Leroy Hubble and Harvey Hubbell IV—handed over the chalice and plaque at the Biennial Banquet.

One of our English antecedents, a Richard Hubbell, was a warden of Rock Church in 1609. An ancestor of the 1988 warden John Nott, another John Nott, was a churchwarden in 1605. Hubbells and Notts would certainly have known each other then.



## FAMILY ITEMS MAKE EXCELLENT CHRISTMAS GIFTS

An easy way to please your family at Christmas is to give family items available from the Society. A brisk business was done in these mementoes at the Biennial Reunion, according to Leroy Hubble, the Finance Chair who was in charge of the sales room. Now they can be purchased by mail. An order form is on the opposite page.

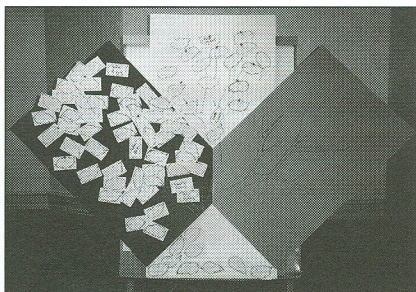
Three books are offered: *Additions & Revisions to History & Genealogy of the Hubbell Family* (1158 pages), *Family Fare* cookbook (255 pages) and *Hubbell Pioneers* (432 pages). Each of these are illustrated. They may be purchased separately or at a discount if two or three are bought together.

A different kind of gift is a membership to the Society for \$15. An 8½" x 11" Gift Certificate will be sent to the new member. A form for gift memberships is on page 12.

Among the mementoes is a plate picturing the Hubble Space Telescope, an enamel pin with the Society seal, a baseball cap, coffee mugs with a coat of arms or a personal photo and note or picture cards.

## FAMILY TREE AT BIENNIAL REUNION

Attendees at the 8th Biennial Reunion in Burlington were given a leaf designating which of Richard Hubbell's three wives they were descended from. These leaves were then mounted on a family tree in the Hospitality Room (see photo).



At the Reunion, 73% were descended from Richard's first wife, Elizabeth Meigs (left branch in the picture). The rest were descended from his second wife, Elizabeth Gaylord (center branch in the picture). No descendants of the third wife, Abigail Prudden Walker, attended. These percentages might have been expected, since Elizabeth Meigs had nine children, Elizabeth Gaylord had four and Abigail had two.

Tracing to the sons of Richard, 12% traced to John senior, 43% to Richard junior, 17% to Samuel senior, 6% to Samuel junior and 20% to James.

## PERSONAL NEWS *Cont. from page 2*

The Rev. **Jessie Scaggs** (#10976) happily reports that intensive physical therapy exercises have greatly improved the connective tissue in her legs which was damaged by Lyme's disease and that she now walks several blocks each day. \* \* \*

Society members **Teri Bybee, Burt and**

## QUILT DRAWING WILL OCCUR AT 1999 REUNION

The Hubbell/Hubble family quilt made by Betty Transue Morgan (#9695) and donated to the Society was on display at the Biennial Reunion in Burlington last June. It is shown in the picture below on a table behind Mary and Leroy Hubble (#11405), who is in charge of tickets for the quilt.



Drawing for the quilt will take place at the 9th Reunion in Springfield, Missouri, in June 1999. Donation tickets may be sent in anytime before then. Tickets are on page 11. Ticket holders need not be present at the drawing to win. Donations to the Quilt Fund will be used for special Society projects.

The quilt has 49 large squares. Twenty three squares have pictures about family history and 26 squares have signatures of family members at the 7th Biennial Reunion in Folsom, California. The colors are coral, gold, brown and white.

## MEMBERS PROVIDE GENEALOGY DATA

Society members are sending two kinds of genealogical information on an almost daily basis, according to Genealogy Chair Hilbert R. Hubble. The items received most frequently are clippings of marriage, birth, and death notices regarding Hubbell/Hubbles and descendants. The information is entered on a computer file.

Several new members have submitted family data sheets which greatly expand the Society's knowledge base. The data sheets are carefully compared with any other information sources that may exist. The data are then entered in the same computer file which has the contents of the 1995 volume *Additions & Revisions to History & Genealogy of the Hubbell Family*.

The records themselves go in file folders coded by source and sent to Hubbell Center for permanent storage. Information of a biographical or historical nature is sorted for forwarding to that committee.

Information may be sent directly to Hilbert R. Hubble at 7239 Grinnell Drive, Derwood, MD 20855 or to Society headquarters.

**Edith Carney, Peter Hansen, Rosella Hansen and Carol Thompson** were part of a reunion of all the descendants of Arthur Owen Hubbell (#3966) and their spouses in Colville and Spokane, Washington, Friday and Saturday, August 15 and 16. Altogether, there were four generations with 19 people from six states. The reunion had been planned for some

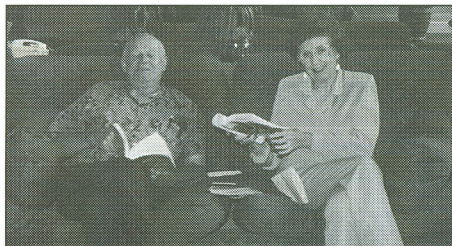
## GALA DEDICATION IN SUTTER CREEK FOR 49ER PLAQUE

A special dedication ceremony for the plaque about William Barker Hubbell was held in Sutter Creek, California, on Saturday, October 18 at 2 p.m.

Hubbell cousins were dressed as pioneers and gold miners. Camp songs were played on a harmonica. City and county officials, the building owners and tenants were introduced. Refreshments were served.

William Barker Hubbell was a Forty-Niner who became a store owner and justice of the peace. The two-story brick building he built in 1867 served as a general store on the ground floor and family residence on the second floor.

The building today is called the Ferreo-McCandless-Boitano Building. Its tenants are Rene of Sutter Creek and the Chatterbox Cafe, which was visited by the 1995 Hubbell Society reunion.



**Ted and Maureen Rischard**

Maureen Rischard (#1078) chaired the committee which made the arrangements for the plaque. Other committee members were Robert J. (#5861) and Marjory Hubbell and Cliff and Nancy Hubbell (#6340) Moses.

The wording on the 20" by 12" bronze plaque is:

In memory of Forty-Niner  
WILLIAM BARKER HUBBELL  
1816-1894  
who built this building for a  
general store circa 1867  
THE HUBBELL FAMILY HISTORICAL SOCIETY  
in commemoration of its  
7th Biennial Reunion, 1995  
Erected 1997

The plaque is compatible with one on the adjoining property which recognizes another Forty-Niner, Robert Carelton Downs, an associate of Leland Stanford.

## CITIZEN OF THE YEAR

F. Wiley Hubbell was named "Citizen of the Year 1996" by the Roanoke, Virginia, City Council at its January 21, 1997 meeting. The award recognizes many years of community service, including being president of the United Way, Treasurer of Habitat for Humanity, Chairman of the City Pension Plan Board of Trustees.

time. Before it could be held, Society member **Eva Hubbell Carney** (#6505) died on December 6, 1996. Her ashes were interred and a memorial service was held at Riverside Memorial Gardens in Spokane on August 16. Three generations of Hubbells are buried there. Eva taught school for over 30 years and was Reading Coordinator for 47 Spokane schools.



# Order Form

Please send the following items to the address on the reverse side of this form.

BOOKS	NUMBER ORDERED	PRICE		TOTAL
		U.S.	Cdn.	
* 1995 Additions & Revisions to 1980 History & Genealogy	_____	\$ 65	\$ 90	_____
Hubbell Pioneers	_____	40	54	_____
Family Fare Cookbook	_____	15	20	_____
* Additions & Revisions plus Pioneers	_____	95	125	_____
* Additions & Revisions plus Family Fare	_____	75	105	_____
* Additions & Revisions plus Pioneers, Family Fare	_____	100	135	_____
* Price for starred items is for HFHS members only. Non-members add \$15 or include \$15 membership fee.				
<b>OTHER ITEMS</b>				
Hubble Telescope Plate	_____	\$ 15	\$ 20	_____
Coffee mug with Hubbell/Hubble coat of arms	_____	5	7	_____
Hubbell-logo Baseball Cap	_____	7	10	_____
Enamel Pin with HFHS Seal	_____	4.50	6.25	_____
Hubble Telescope Sew-on Patch	_____	3	4	_____
Poster (14"x20") of Bewdley in 17th century (Wakeman home)	_____	7.50	10	_____
Bewdley note card and envelopes (half price with any book)	_____	5 for \$2	2 for \$1	_____
Post cards (7 Hubbell sites, Terrace Hill, Telescope Launch {mix/match})	_____	12 for \$4	9 for \$4	_____
Personal Photo Coffee Mug with HFHS Seal (send photo, allow 30 days)	_____	12	16	_____
<b>TOTAL</b>				
_____				

Make check payable to H.F.H.S. Mail check and this form to Hubbell Family Historical Society, P.O. Box 3813GS, Springfield, MO 65808-3813

## THE HUBBELL FAMILY HISTORICAL SOCIETY QUILT FUND

Donation Only — \$1.00 U.S., \$1.35 Canadian

Name: \_\_\_\_\_  
 Street Address: \_\_\_\_\_  
 City: \_\_\_\_\_  
 Send check to: H.F.H.S. Quilt Fund, Mt. Erie State Bank, Mt. Erie, Illinois 62446

## THE HUBBELL FAMILY HISTORICAL SOCIETY QUILT FUND

Donation Only — \$1.00 U.S., \$1.35 Canadian

Name: \_\_\_\_\_  
 Street Address: \_\_\_\_\_  
 City: \_\_\_\_\_  
 Send check to: H.F.H.S. Quilt Fund, Mt. Erie State Bank, Mt. Erie, Illinois 62446

## THE HUBBELL FAMILY HISTORICAL SOCIETY QUILT FUND

Donation Only — \$1.00 U.S., \$1.35 Canadian

Name: \_\_\_\_\_  
 Street Address: \_\_\_\_\_  
 City: \_\_\_\_\_  
 Send check to: H.F.H.S. Quilt Fund, Mt. Erie State Bank, Mt. Erie, Illinois 62446

## THE HUBBELL FAMILY HISTORICAL SOCIETY QUILT FUND

Donation Only — \$1.00 U.S., \$1.35 Canadian

Name: \_\_\_\_\_  
 Street Address: \_\_\_\_\_  
 City: \_\_\_\_\_  
 Send check to: H.F.H.S. Quilt Fund, Mt. Erie State Bank, Mt. Erie, Illinois 62446



**The Hubbell Family Historical Society**

2051 East McDaniel Street  
P.O. Box 3813 GS  
Springfield, MO 65808-3813

ADDRESS CORRECTION REQUESTED



**THE HUBBELL FAMILY HISTORICAL SOCIETY**

P.O. Box 3813 GS  
Springfield, MO 65808-3813  
Fax: (417) 865-0163  
(HubbellGen@aol.com)

**GIFT MEMBERSHIP  
APPLICATION FORM**

Membership for The Year(s) \_\_\_\_\_

Gift Recipient's Name \_\_\_\_\_

(List as recipient would want it to appear in the Society *Annual*,  
that is John J. Hubbell; M/M John J. Hubble; John Jay & Ann Hubbel;  
Jane Hubble Holt; M/M Ray Holt, The North Carolina State Library, etc.)

Street Address \_\_\_\_\_

City \_\_\_\_\_

State/Province \_\_\_\_\_ Mail Code \_\_\_\_\_

Name of Donor(s) \_\_\_\_\_

Please enclose check for \$15.00 for individuals or couples or  
\$10 for libraries and societies and mail to above address.

**THE RECIPIENT WILL RECEIVE A HANDSOME 8 1/2" X 11"  
CERTIFICATE WITH HIS/HER NAME AND THE DONOR'S NAME  
ON IT. IT IS A LOVELY GIFT FOR CHRISTMAS, A BIRTHDAY,  
ANNIVERSARY, GRADUATION, OR WEDDING.**

Please use this form to provide a gift membership for your adult children,  
parents, or any library, historical or genealogical society of your choice. Make  
your check payable to the HFHS at the above address.

Memberships benefit all of the Hubbell Family by enabling the Society to  
further its work in genealogy, history and biography and biennial reunions.

**"1000 BY 2000"**

Bulk 3rd Rate  
U.S. Postage  
**PAID**  
Lenhartsville, PA  
Permit No. 9  
Zip Code 19534